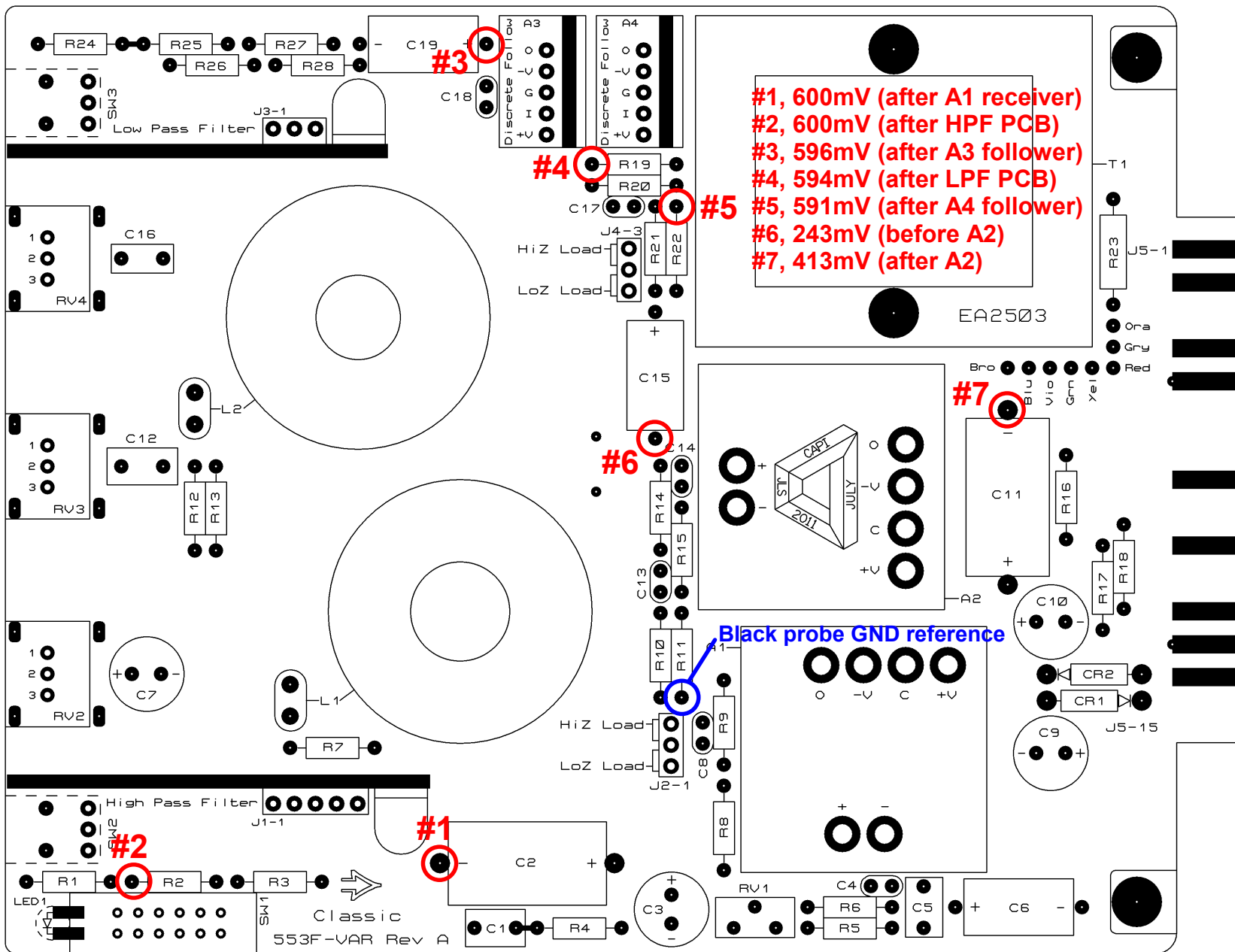


**Inject a 400Hz sine wave @ +4dBu to the input. EQ switch should be off.
Results below were measured with a Fluke DMM set to AC Voltage.**



- #1, 600mV (after A1 receiver)
- #2, 600mV (after HPF PCB)
- #3, 596mV (after A3 follower)
- #4, 594mV (after LPF PCB)
- #5, 591mV (after A4 follower)
- #6, 243mV (before A2)
- #7, 413mV (after A2)