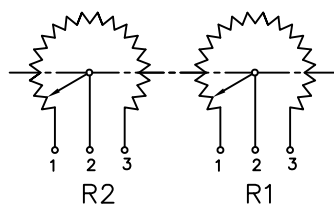
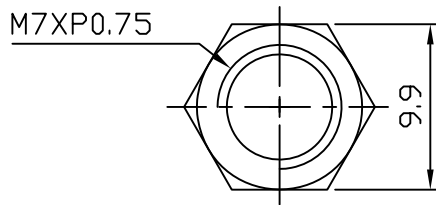
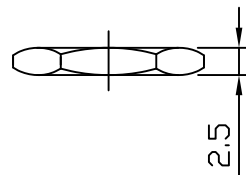


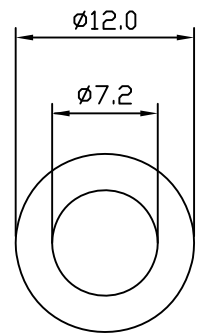
PCB MOUNTING HOLE DETAIL



CIRCUIT



HEX NUT
PART #34-1032-2A



FLAT WASHER-0.4 THICK
PART #34-1034-2A

SPECIFICATIONS

ELECTRICAL:

RESISTANCE: R1 & R2 = 10K OHMS
 RESISTANCE TOLERANCE: ±20%
 TAPER: R1 & R2 = "A" AUDIO TAPER
 R1 IS CONTROLLED BY OUTER SHAFT
 R2 IS CONTROLLED BY INNER SHAFT
 POWER RATING: 0.05W
 RESIDUAL RESISTANCE: 20 OHMS MAX.
 DIELECTRIC STRENGTH: 300 VAC / 60 SEC.
 ELECTRICAL ROTATION: 260°±5°

MECHANICAL:

MECHANICAL ROTATION: 300°
 DETENTS: NONE
 RUNNING TORQUE: OUTER SHAFT: 0.7 TO 1.25 OZ-IN
 INNER SHAFT TORQUE TO BE 0.2 TO 0.4 OZ-IN LESS THAN OUTER SHAFT.
 HARDWARE: PROVIDE HARDWARE IN BULK PACKAGING

NOTE: BOTH SHAFTS TO BE SOLID WITHOUT SLOT

ENVIRONMENTAL

OPERATING TEMP: -10°C to +70°C
 LOAD LIFE: 100,000 CYCLES
 RoHS COMPLIANT

MARKING: P092C-082A AND DATE CODE

ISS	ECN NO	DATE	BY	CHKD	APP
1	30800	1.11.13	JV		.
.
.



THIS DOCUMENT CONTAINS PROPRIETARY INFORMATION OF BI TECHNOLOGIES CORPORATION AND IS SUBJECT TO THE CONDITION THAT THE INFORMATION BE RETAINED IN CONFIDENCE, NOT TO BE REPRODUCED IN WHOLE OR IN PART, AND NOT BE USED OR INCORPORATED IN ANY PRODUCT WITHOUT EXPRESS WRITTEN AGREEMENT BY BI TECHNOLOGIES CORPORATION.

	DWG NAME: PANEL POT
	SCALE 2/1
	DWG NO. P092C-082A